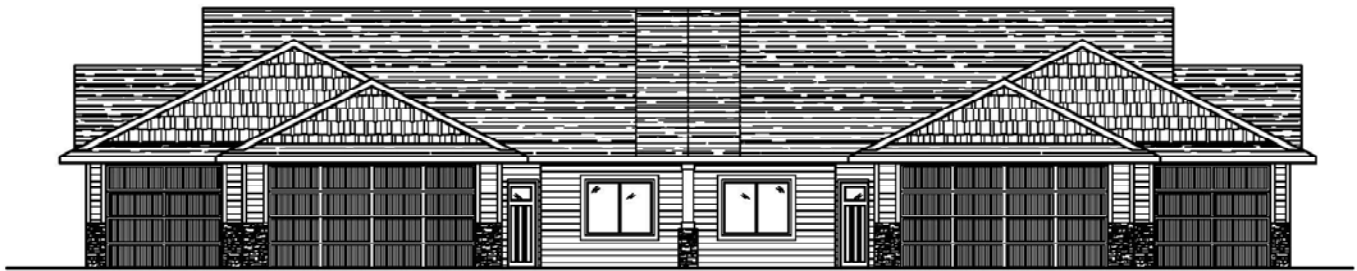


7515 W. FLOWERFIELD PL.



1636 Sq. Ft. Twin Home RH Slab on Grade
2 bedroom, Den, 2 bath, 3 Car Garage

BASE PRICE: \$ 384,900



Care free & Stair free living at it's best.

RB FLOWREFIELDS TWIN HOME INCLUDES SOD, SPRINKLER, MULCH

School Districts:

Sioux Falls Schools

Lot Size: See Site plan

Development:

RB Flowerfield

Room Sizes:

Living: 16.0 x 19.5

Dining: 13.1 x 10.0

Kitchen: 14.1 x 10.0

Master Bedroom: 12.1 x 14.0

Garage: 32.0 x 24.0

Room Sizes:

Main Bath: 5.0 x 9.7

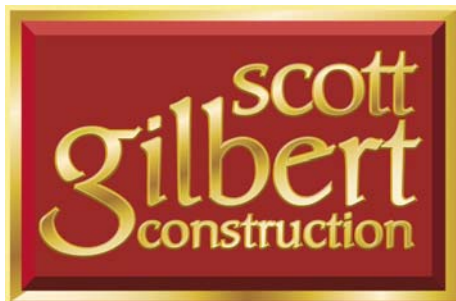
Master Bath: 5.8 x 13.11

Bedroom 2: 11.1 x 11.4

Den/Bedroom: 10.8 x 13.1

Laundry: 8.5 x 5.0

Storage: 14.6 x 5.0



5200 S. CLIFF AVENUE
SUITE 101
SIOUX FALLS, SD 57108

PHONE: 605-331-3940

WEBPAGE: WWW.SCOTTGILBERTHOMES.COM