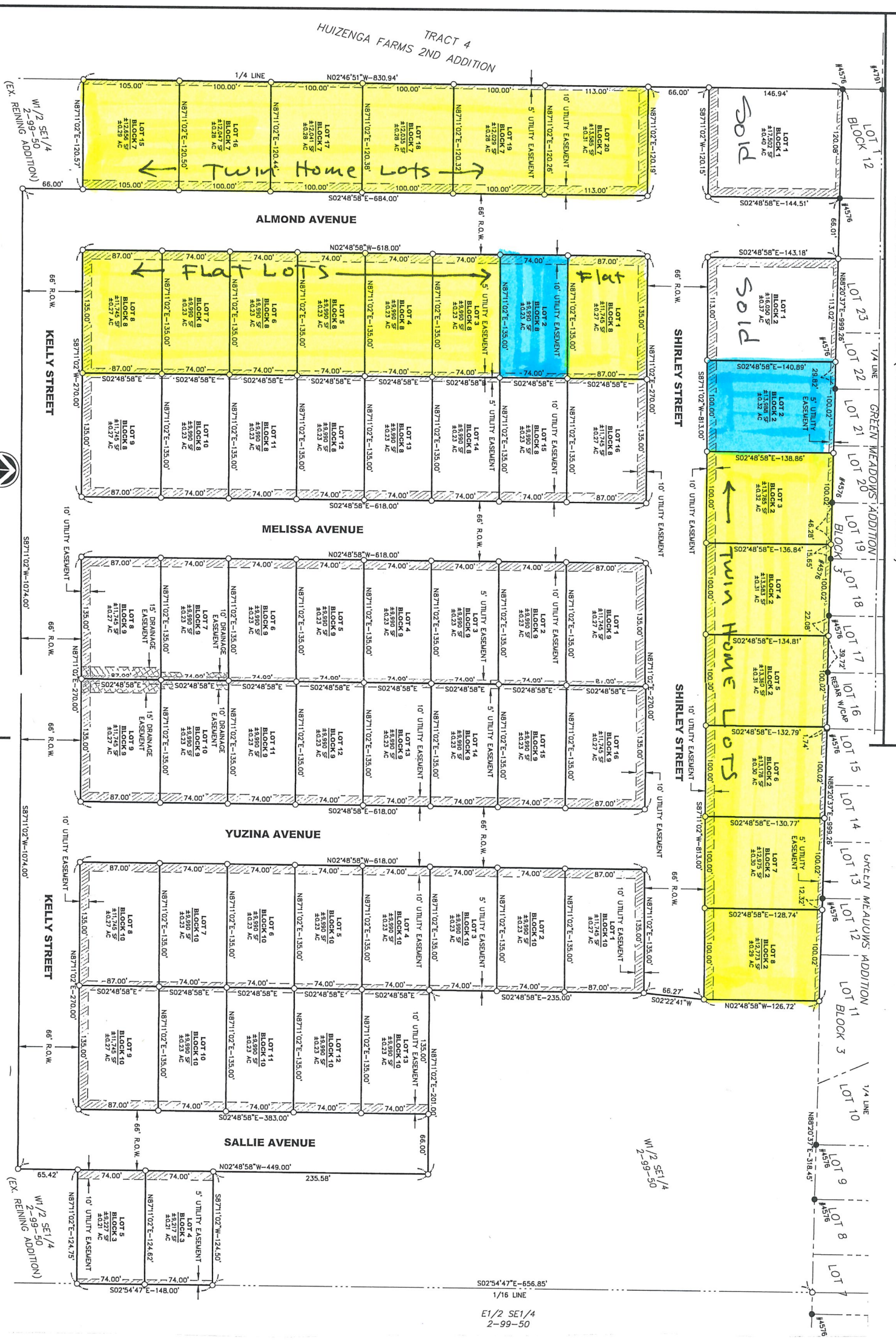


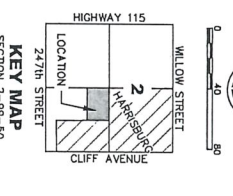
PLAT OF LOT 1 OF BLOCK 1, LOTS 1-8 OF BLOCK 2, LOTS 4-5 OF BLOCK 3, LOTS 15-20 OF BLOCK 7,  
 LOTS 1-16 OF BLOCK 8, LOTS 1-16 OF BLOCK 9, AND LOTS 1-13 OF BLOCK 10  
**TIGER MEADOWS ADDITION**  
 TO THE CITY OF HARRISBURG, LINCOLN COUNTY, SOUTH DAKOTA.  
 CONTAINING #22.56 AC (INCLUDING #6.74 AC R.O.W.)

Open Lots SAC  
 Model Homes



**LEGEND**

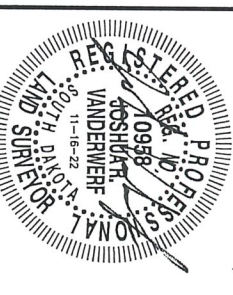
- EASEMENT LINE
- PROPERTY LINE
- RIGHT OF WAY LINE
- QUARTER LINE
- FOUND MONUMENT
- SET 5/8" X 18" CARVED MARK
- FOUND SECTION CORNER
- PLATTED PROPERTY LINE
- OVERLAND DRAINAGE EASEMENT
- UTILITY EASEMENT



**GENERAL NOTES:**

1. BASIS OF BEARINGS FOR THIS DRAWING IS SOUTH DAKOTA STATE PLANE, SOUTH ZONE 4002, US FOOT.
2. A 10' UTILITY EASEMENT IS SHOWN ALONG ALL REAR YARDS.
3. EXISTENT IS SHOWN ALONG ALL REAR YARDS.

**DGR ENGINEERING**  
 1300 S. HIGHLAND AVENUE  
 HARRISBURG, SD 57437  
 (605) 338-4777  
 (605) 338-4175 fax  
 dgr.com  
 PAGE 1 OF 3



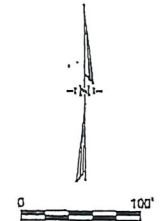
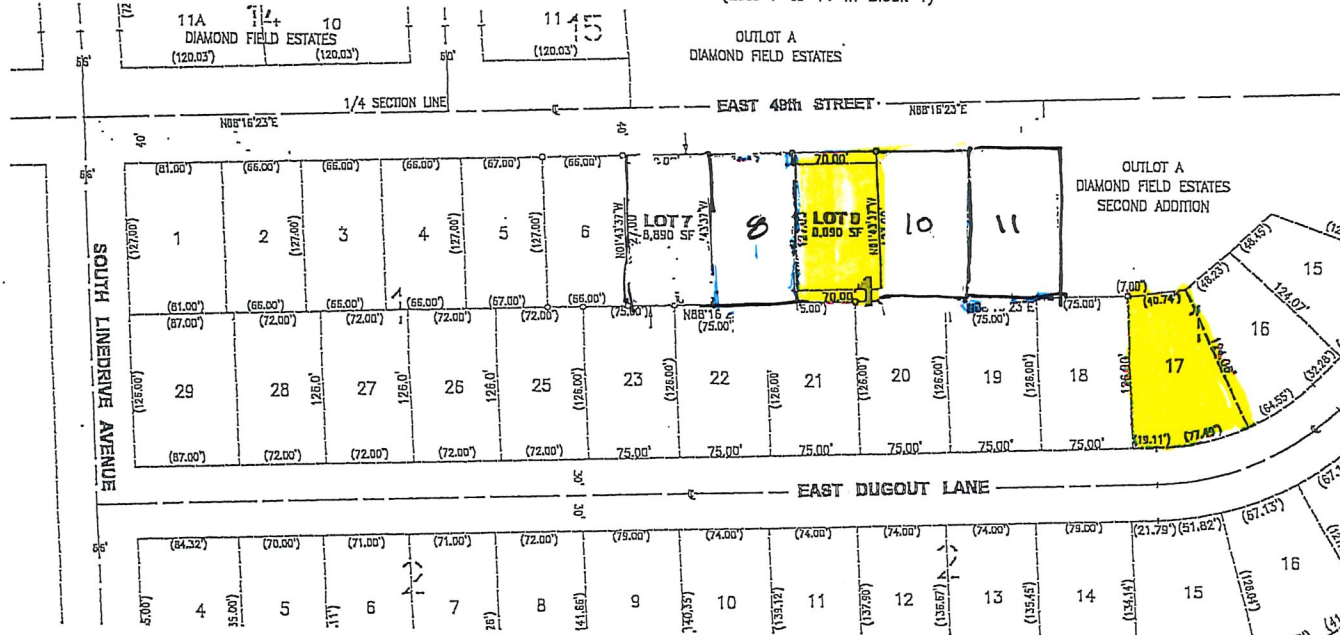
PLAT NO. 111620214321 PL. 7/26/2016 10:00 AM. 11/16/22

**OPEN LOTS - 2**

Checked By: G. Andersh  
 Drawn By: E. Weeldreyer  
 Project No. 14059  
 Dated: 7/09/2018  
 Dwg: Diamond Field Estates 2nd B1 L7-11

# DIAMOND FIELD ESTATES SECOND ADDITION TO THE CITY OF SIOUX FALLS, MINNEHAHA COUNTY, SOUTH DAKOTA

(Lots 7 to 11 in Block 1)



**NOTES:**  
 ORIENTATION OF THIS BEARING SYSTEM IS THE UNIVERSAL TRANSVERSE MERCATOR SYSTEM  
 TOTAL AREA OF PLAT = 1.34 ACRES, INCLUDING 0.32 ACRES OF STREET RIGHT-OF-WAY

- LEGEND**
- PROPERTY CORNER FOUND
  - PROPERTY CORNER SET (#5x1.5" REBAR W/SURVEYOR'S ID CAP)
  - PREVIOUSLY PLATTED AREA
  - (98.00') PREVIOUSLY PLATTED DIMENSION
  - UE UTILITY EASEMENT

**SURVEYOR'S CERTIFICATE**

I, Gary L. Andersh, of Schmitz, Kalda & Associates, Inc., a Registered Land Surveyor in the State of South Dakota, do hereby certify that I have, on or before this date, and at the request and direction of the property owner, surveyed a portion of Outlot A of Diamond Field Estates Second Addition to the City of Sioux Falls, Minnehaha County, South Dakota, and divided and replatted the same into the following as shown on the plat:

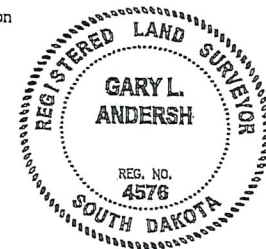
Lots 7 to 11 in Block 1; and adjacent street right-of-way

The same shall hereafter be known and described as Diamond Field Estates Second Addition to the City of Sioux Falls, Minnehaha County, South Dakota.

I further certify that to the best of my knowledge the plat correctly represents the same, is true and correct and that it was made under my direct supervision.

Dated: July 9, 2018

Gary L. Andersh, LS



VICINITY MAP

Prepared By:  
 SCHMITZ, KALDA & ASSOC., INC.  
 320 N. Main Avenue  
 Sioux Falls, SD 57104  
 (605) 332-6241

**SKA** Schmitz, Kalda & Associates, Inc.